

# GL events Italia



**LINGOTTO**  
**FIERE**





# Index

Flexibility  
Functionality  
Connections  
Cinema

# Bringing People Together

Creating connections, offering opportunities to share experiences, and putting people first. These are the hallmarks of GL events Group, which operates in Italy through GL events Italia, based in Turin at Lingotto Fiere.

# Lingotto Studios

## brings imagination to life

Through its Lingotto Studios division, GL events Italia makes the Lingotto Fiere venue **the perfect location for audiovisual productions**. The vast and versatile spaces are transformed into dreamscapes for cinema, television, and photography, setting the stage for future stories.

Located **in the heart of Turin**, one of Italy's three treasured film capitals, the historic Lingotto buildings form a vibrant, fully serviced district. Here, past and present intertwine, inspiring endless possibilities.



# Lingotto Studios carries an unparalleled legacy

Throughout its century-long history, the Lingotto building complex has acquired many **identities**.

## Industrial archaeological site

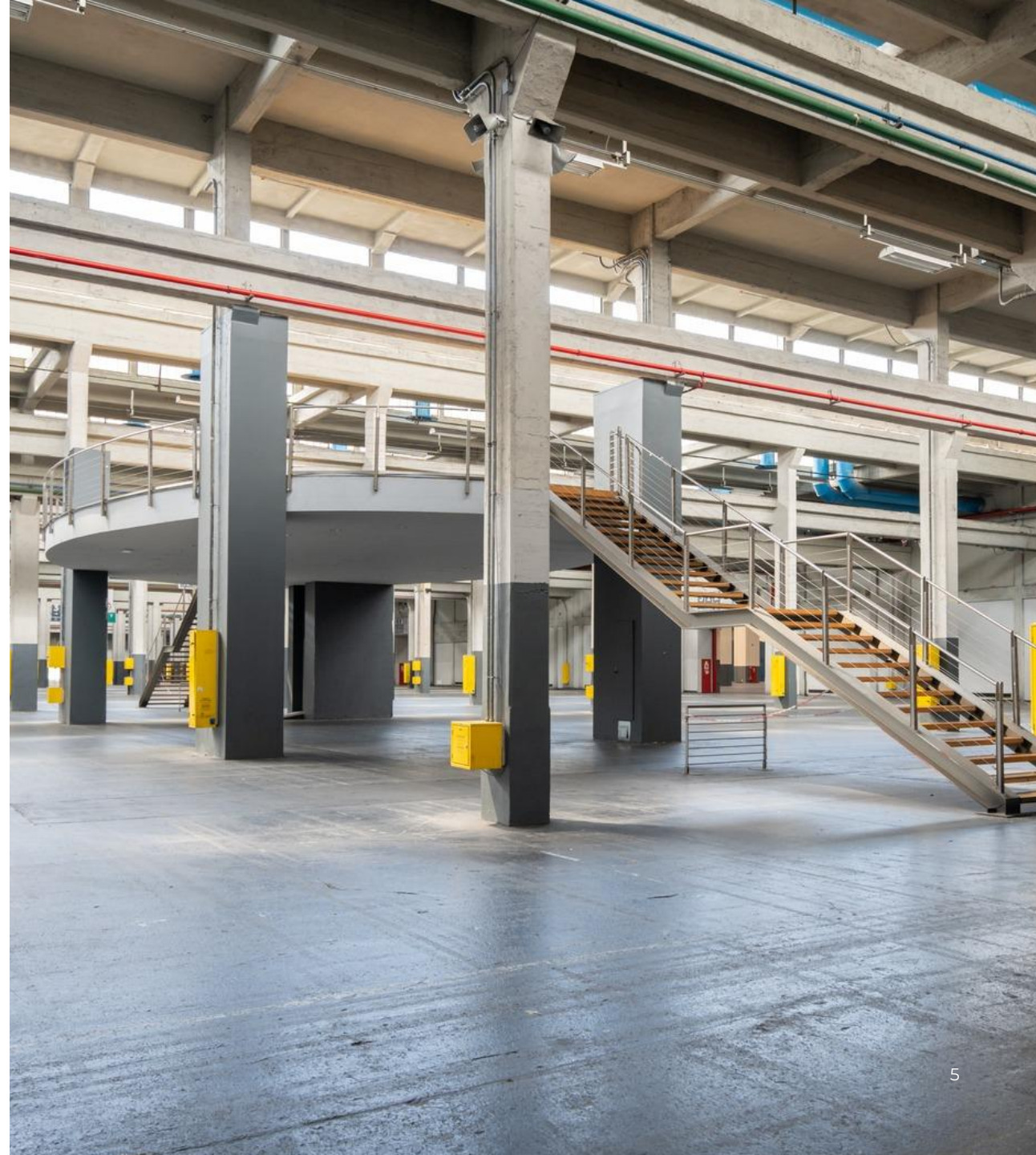
The complex was originally built to house the main FIAT car factory plant.

## Multi-purpose district

In the 90s, the architect Renzo Piano designed the transformation of the former factory into a multi-functional cluster within the city.

## Olympic site

In 2006 Turin hosted the Winter Olympics. On this occasion, the Oval was built to house the speed skating rink.



# Flexibility

Bringing People Together with **Flexibility**

Lingotto Studios spaces are extremely versatile and can be used for **any type of production**, including film, television.

The spaces include 4 indoor stages and 3 outdoor areas, with a total area of 60,000 square meters and 30,000 square meters respectively. The height of the stages ranges from 10 to 18 meters.

The hall **post-industrial** architecture and the Oval **contemporary** aesthetic make them particularly suitable for recreating expansive settings. Even the **rooftop**, with its striking urban backdrop, is perfect for dynamic and adrenaline-charged scenes, adding an extra edge to any shoot.



# The Studios map



# Hall 1

A **7,620 square meters** column-free space, the first stage can be illuminated with natural and artificial light, or completely darkened if needed.

**Length** | 141 m

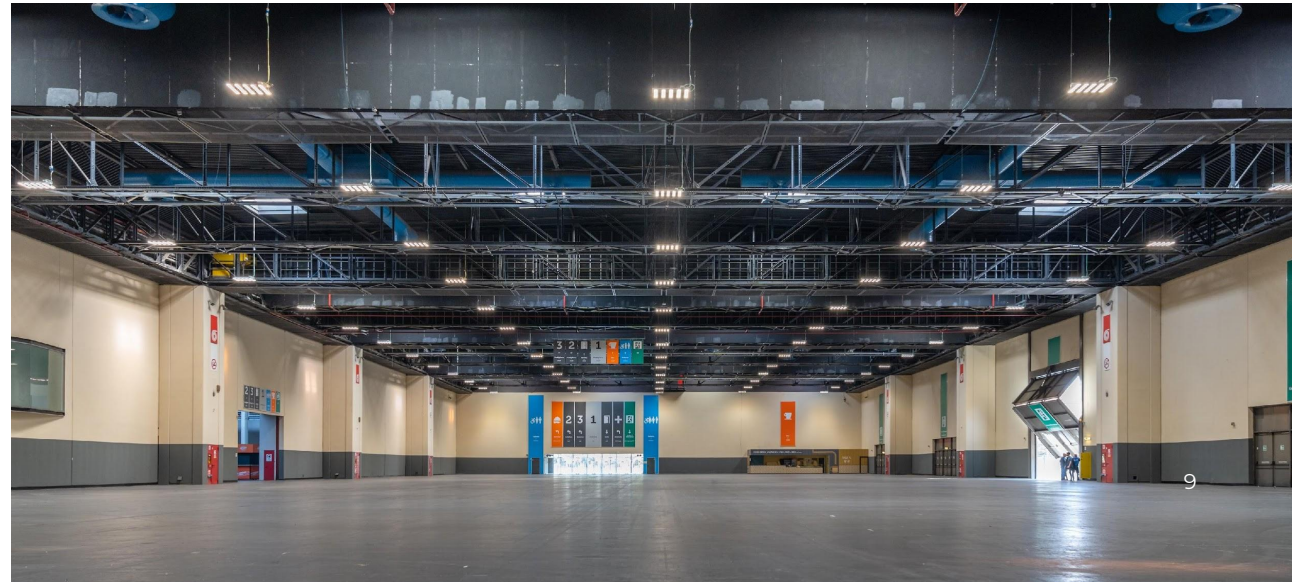
**Width** | 54 m

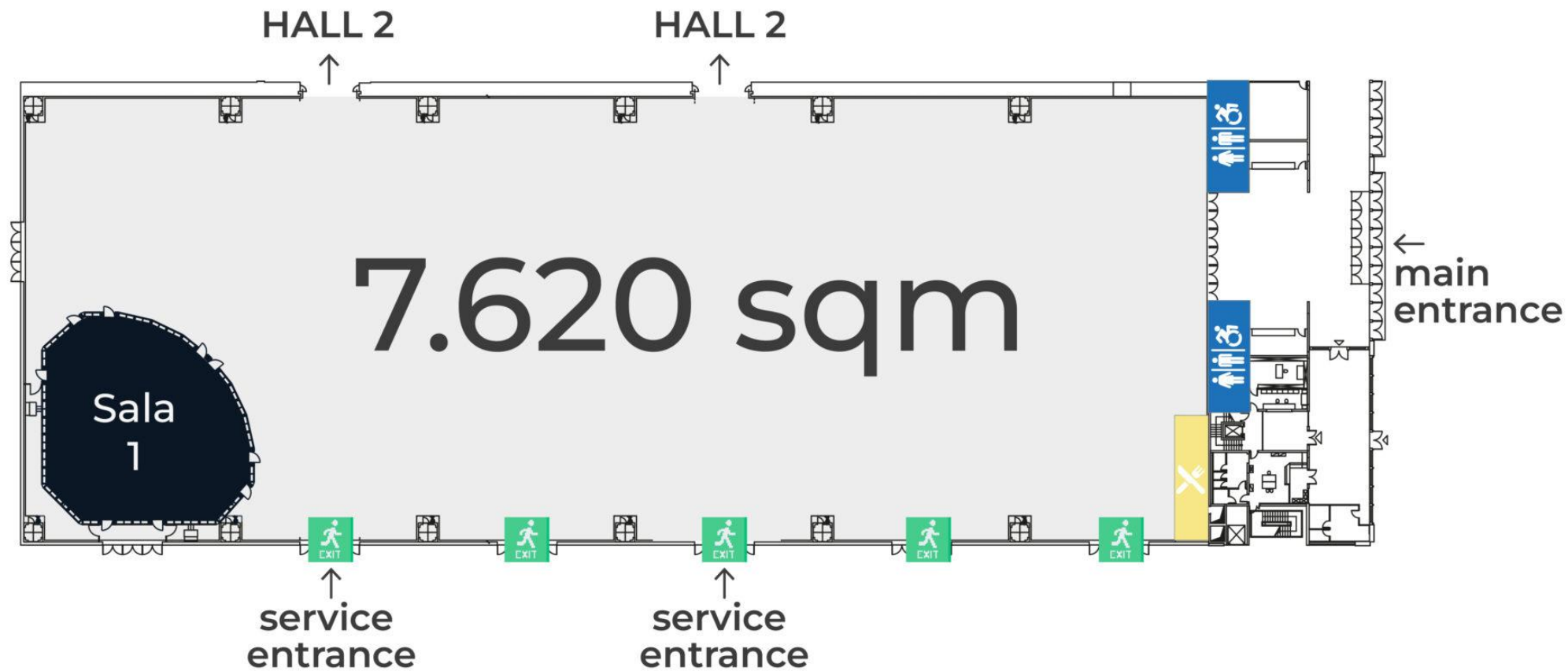
**Height** | 10.5 m

**Gross surface** | 7,620 m<sup>2</sup>

**Vehicle entrances** | 2

**Room 1** | 494 m<sup>2</sup>





length 141 m | width 54 m | height 10,5 m | gross area 7.620 sqm

# Hall 2

With its **17,960 square meters**, the second stage provides an authentic post-industrial scenery, as it retains the original features of the former car factory pressing room.

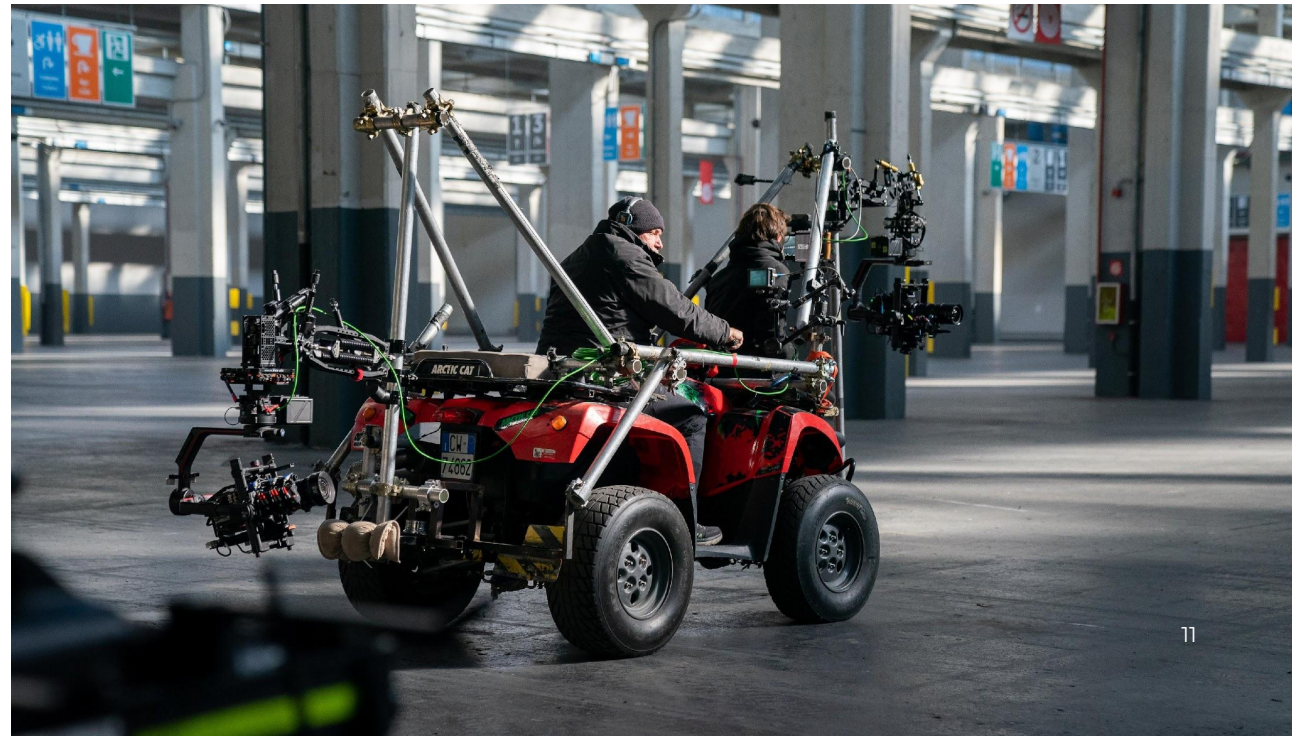
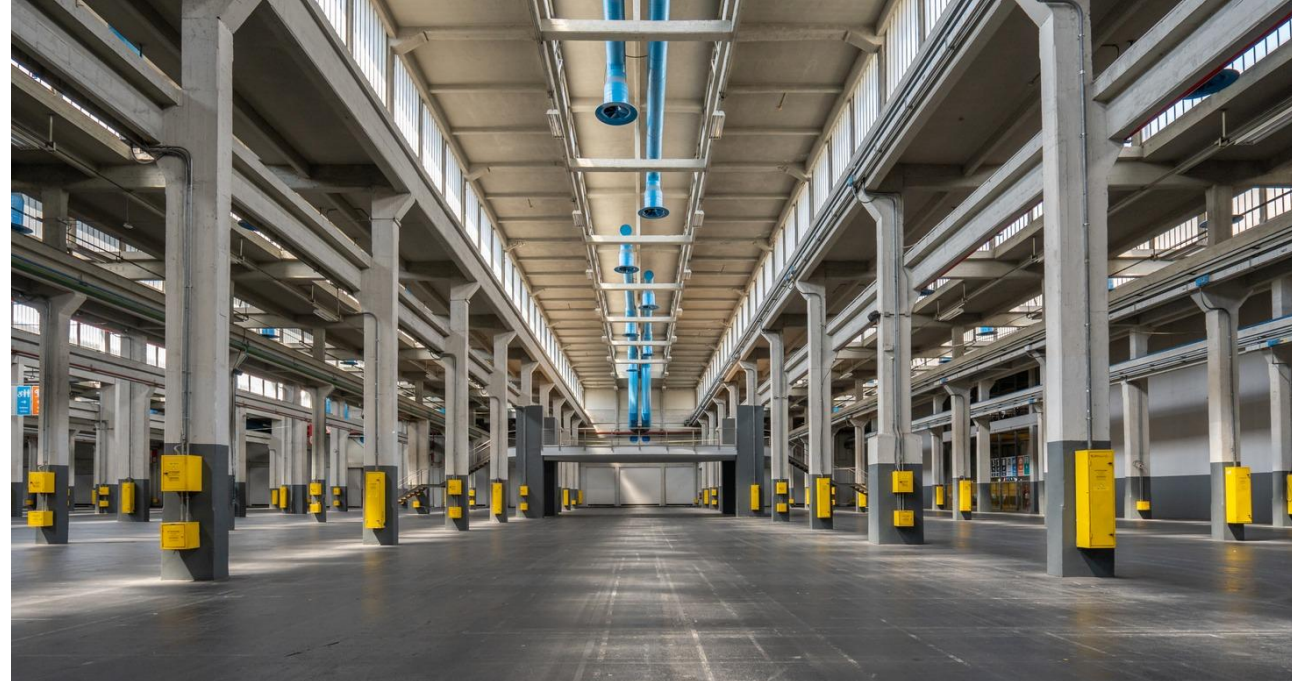
**Length** | 187 m

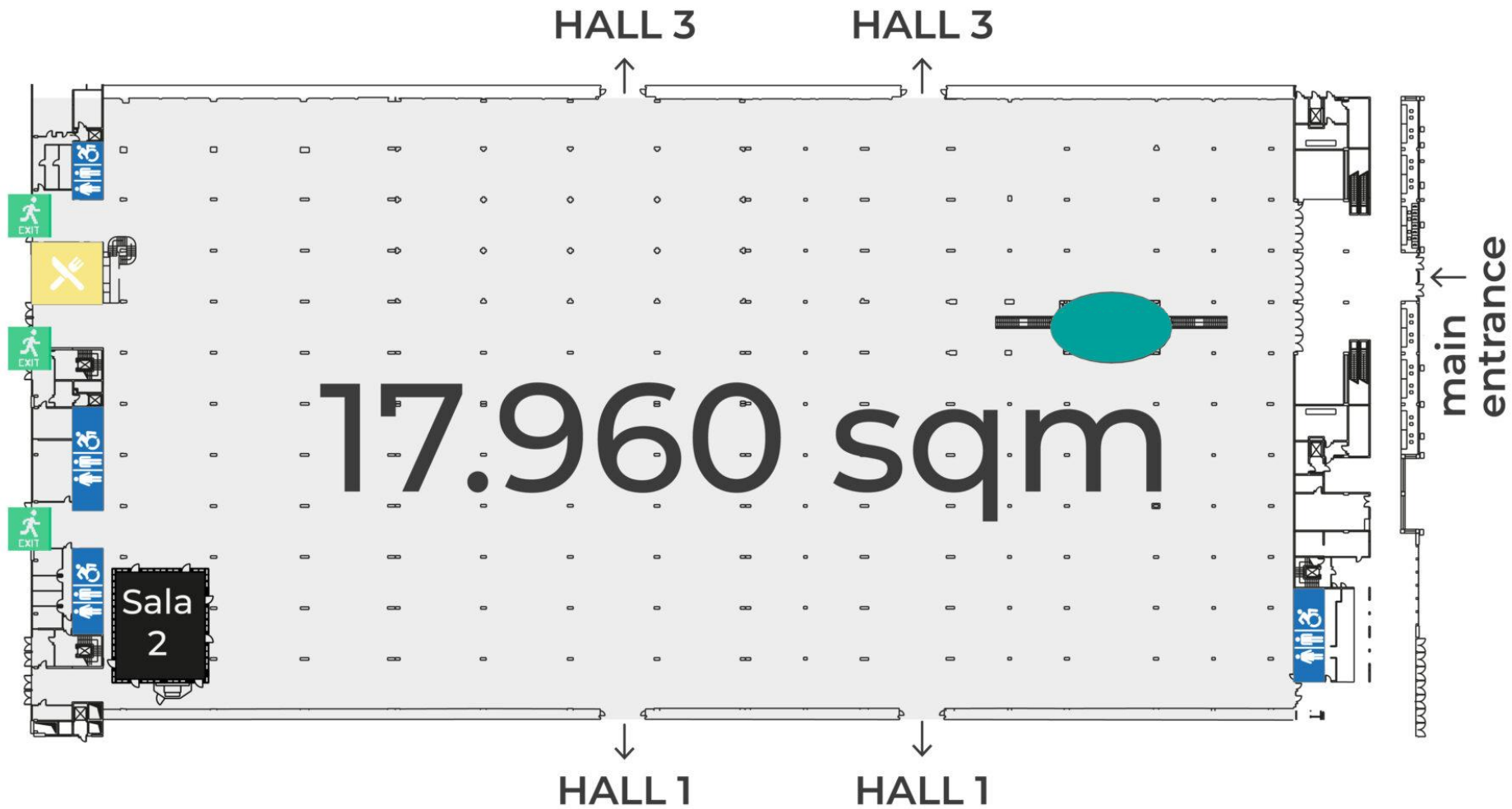
**Width** | 96 m

**Height** | min. 9.9 m – max. 14.2 m

**Gross surface** | 17,960 m<sup>2</sup>

**Room 2** | 235 m<sup>2</sup>





length 187 m | width 96 m | height 9,9-14,2 m | gross area 17.960 sqm







# Hall 3

The third stage can be lit with artificial or natural light, or completely darkened. There are 12 columns in this **12,860 square meters** space, making it possible to include different sets in the same space. In addition, the adjacent outdoor space can be integrated into the stage.

**Length** | 187 m

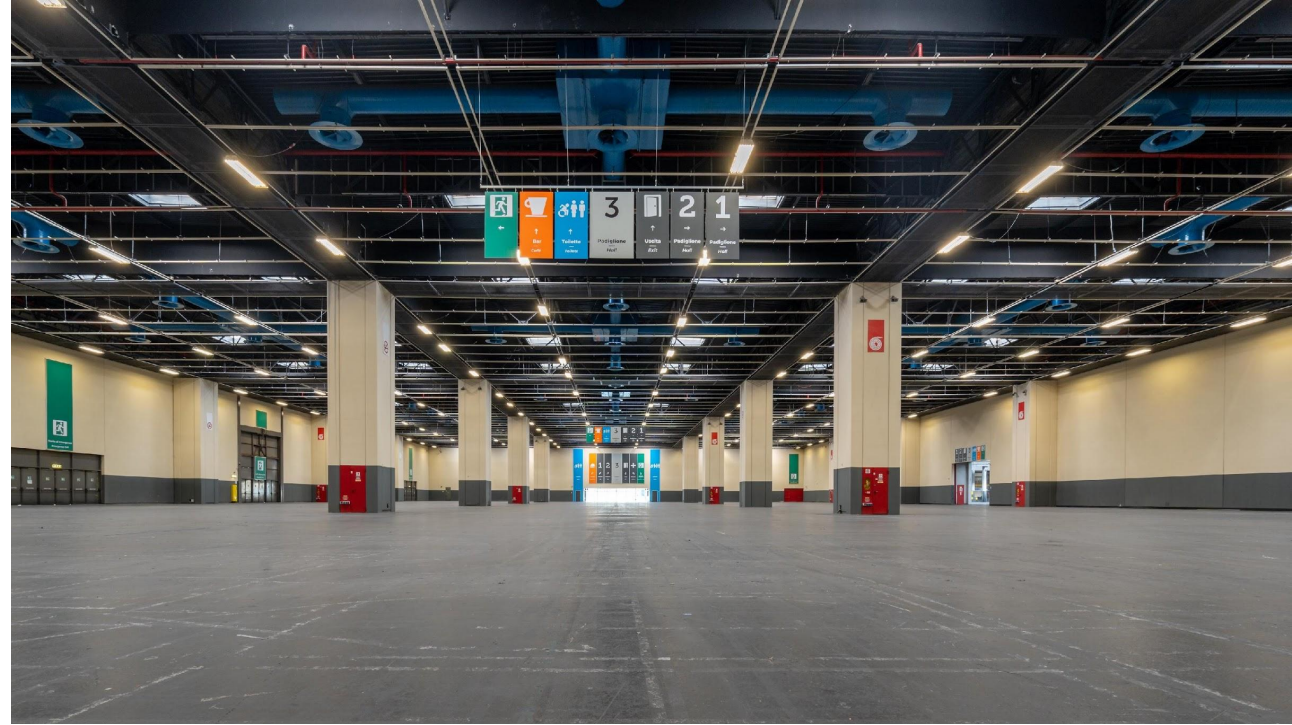
**Width** | 74 m

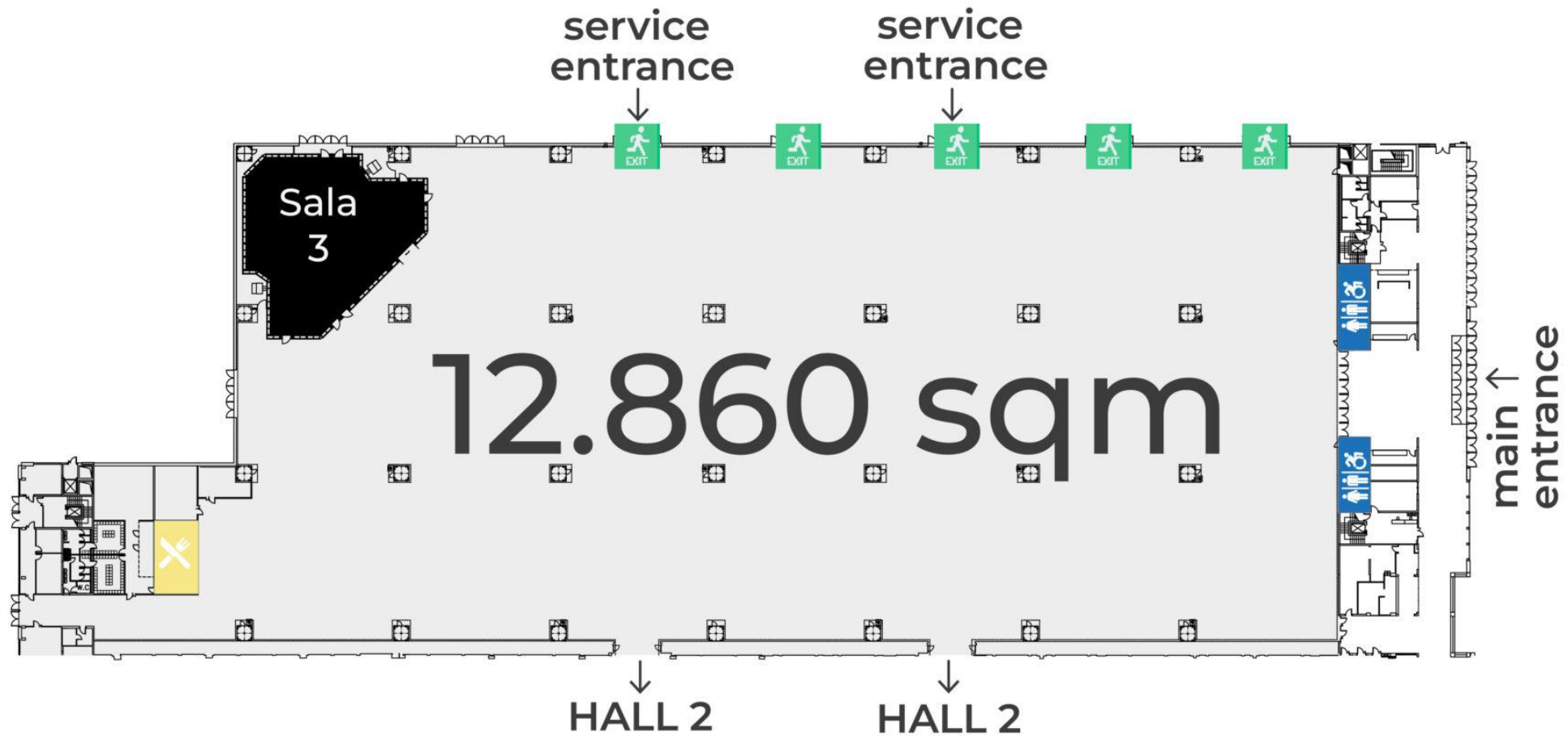
**Height** | 10.5 m

**Gross surface** | 12,860 m<sup>2</sup>

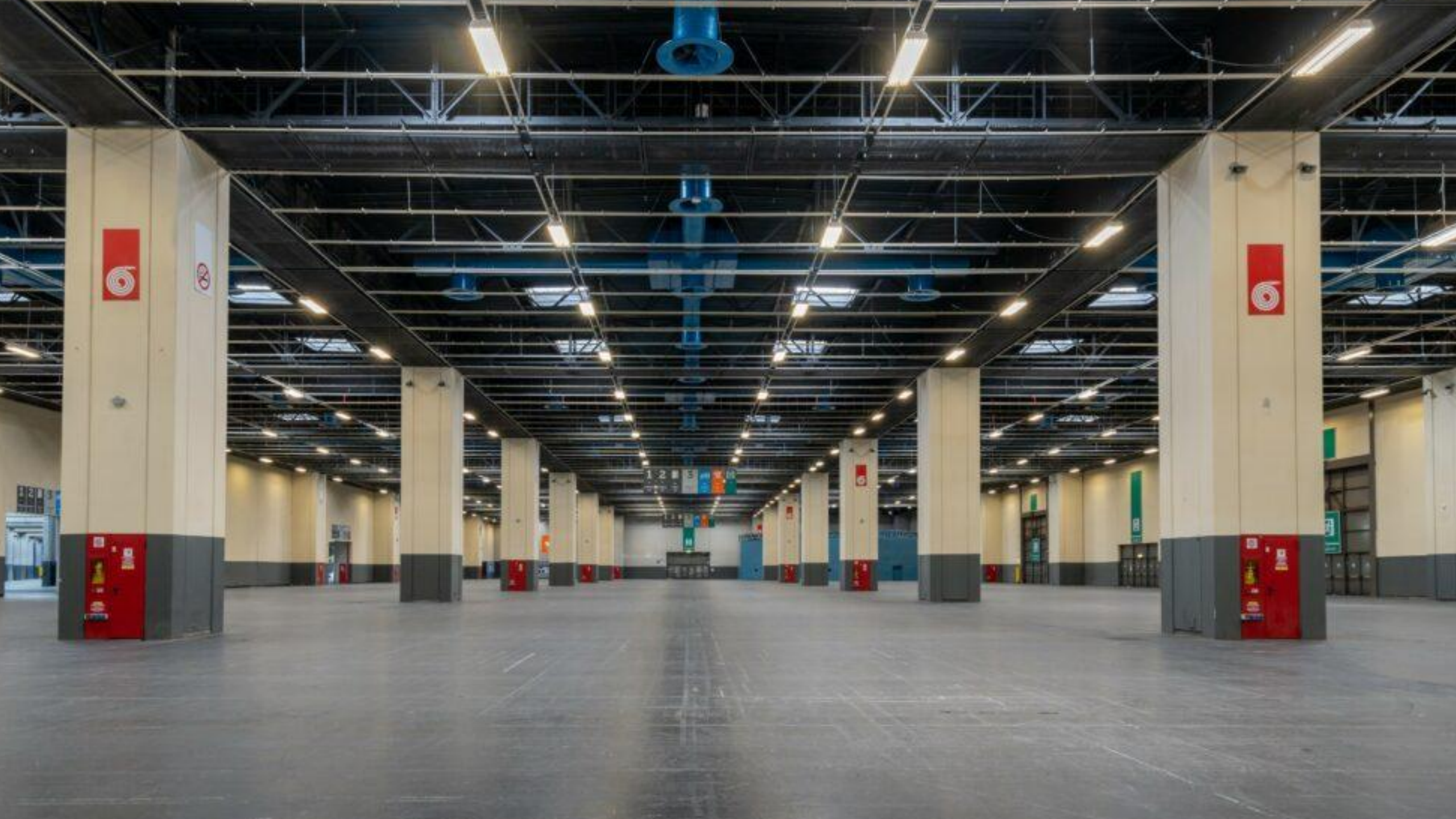
**Vehicle entrances** | 2

**Room 3** | 515 m<sup>2</sup>





length 187 m | width 74 m | height 10,5 m | gross area 12.860 sqm





# Hall Oval

Thanks to **20,000 square meters** of column-free space, this modern structure is incredibly flexible - it can be transformed into almost every setting, such as a sports arena, an airport, a shopping mall or even a soccer field.

**Length** | 210 m

**Width** | 90 m

**Vehicle entrances** | 4

**Entrances** | 2

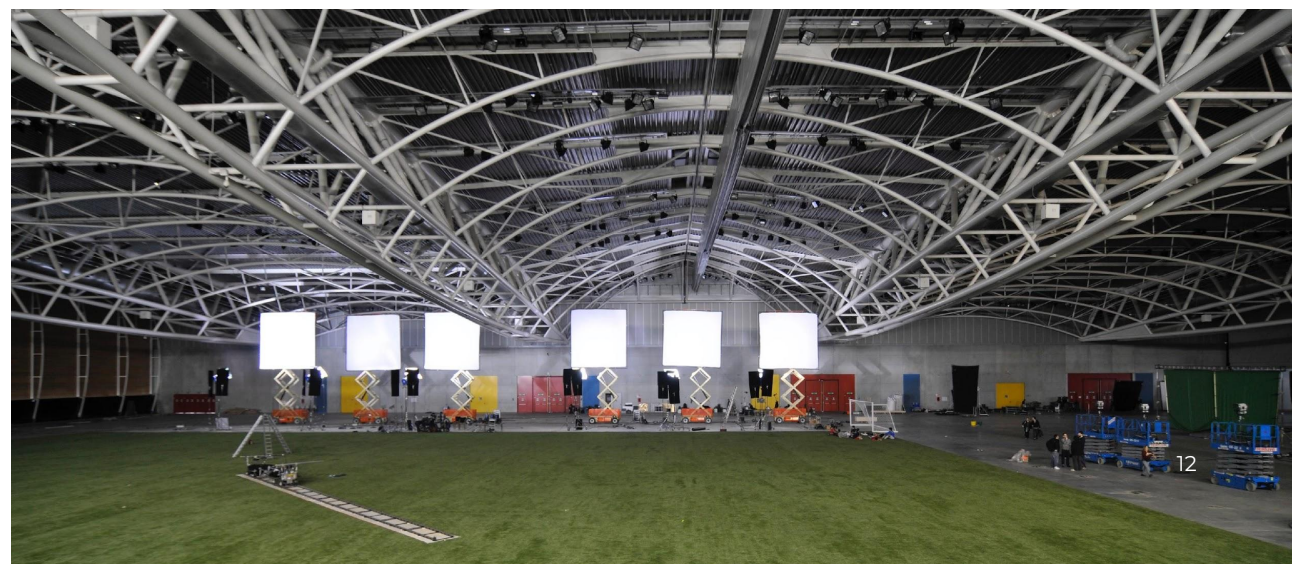
**Foyer** | 1,500 m<sup>2</sup>

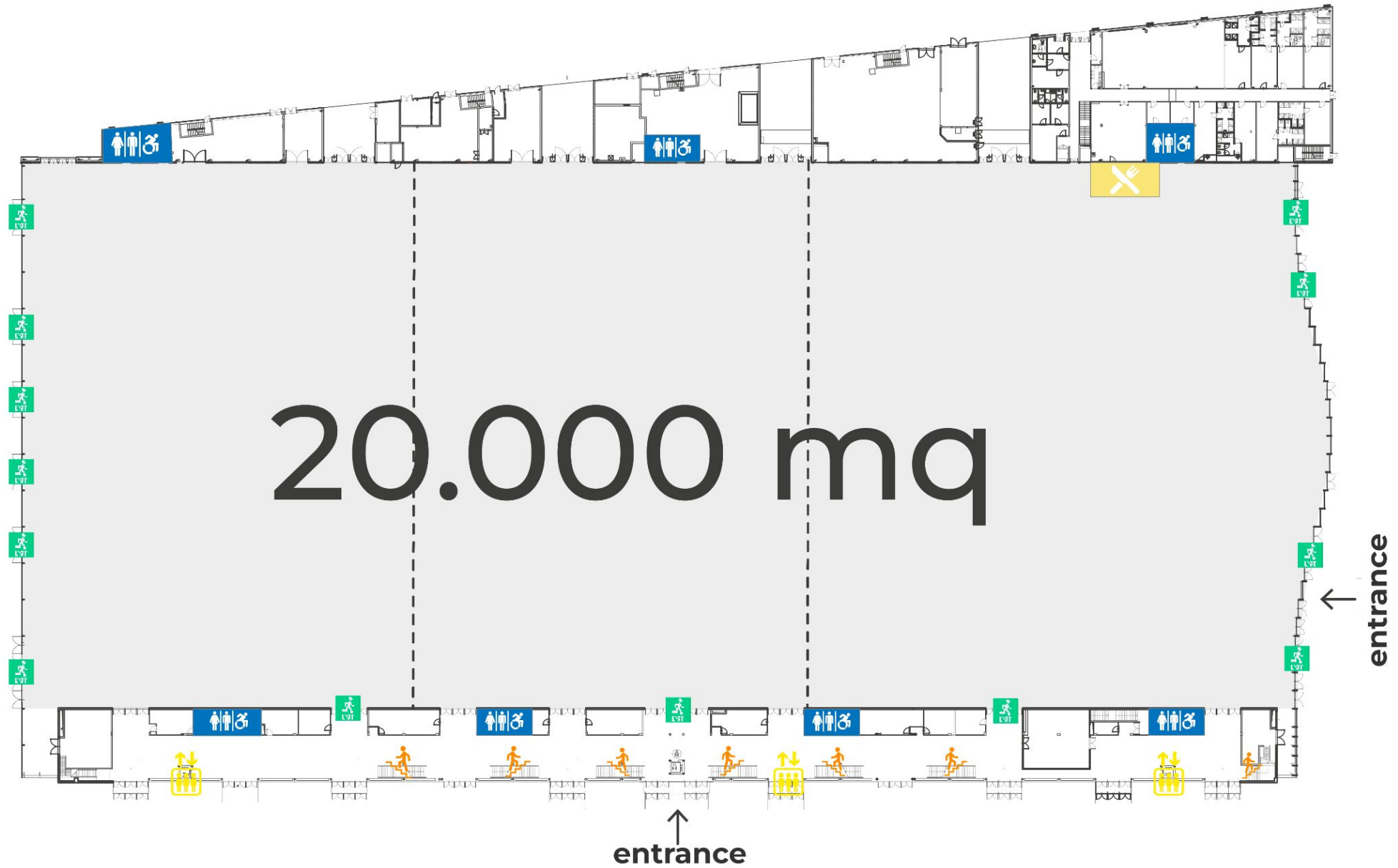
**Under beam height** | min. 8 m – max. 14 m

**Gross floor area** | 20,000 m<sup>2</sup>  
divisible in 3 areas of about 6,500 m<sup>2</sup> each

**First floor**

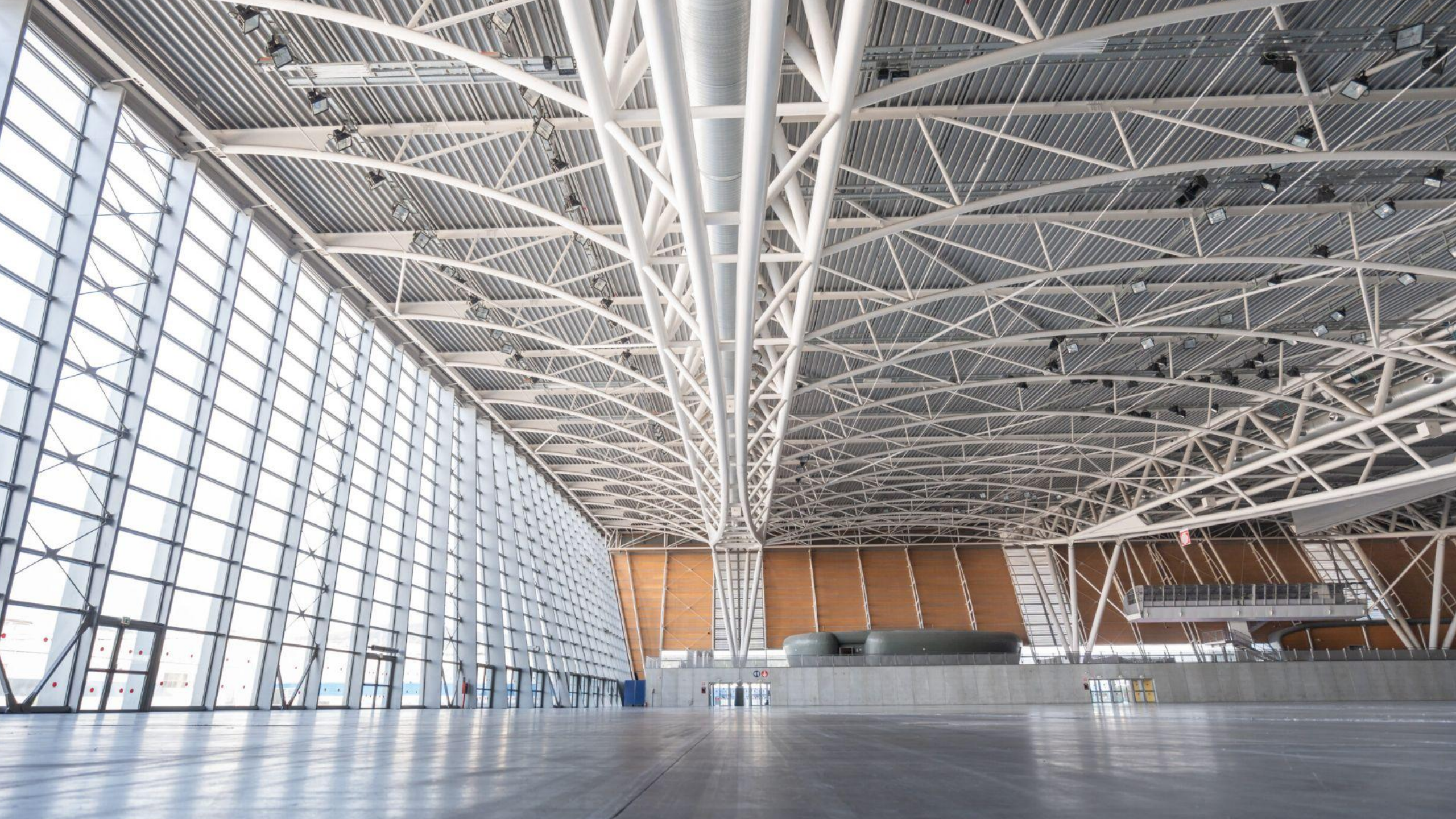
**Terrace** | 1,500 m<sup>2</sup>  
2 conference room – up to 12 offices













# Production Office

The production offices located above the exhibition halls represent a **strategic asset** for overall operations: they offer a privileged control point and an immediate connection with the activities taking place below.

These spaces can be dedicated to **operational offices** for production, coordination, and control teams, ensuring efficiency, quick decision-making, and smooth management of every phase. A functional and private environment, designed to work in close connection with the core operations.



# Functionality

Bringing People Together with **Functionality**

Lingotto Studios is also an extremely **practical** location. The spaces can be transformed into a complete **production hub**, where it is easy and pleasant for everyone to work.

The Studios have everything the crew needs.

**3 four-star hotels**, a shopping mall, and restaurants within the same building complex

Easy access and private parking for large vehicles

Production offices, warehouses, catering areas

Reserved access areas





# Connections

Bringing People Together with **Connections**

Despite its size, Lingotto Fiere is part of the city center, making the studios **easily accessible**.

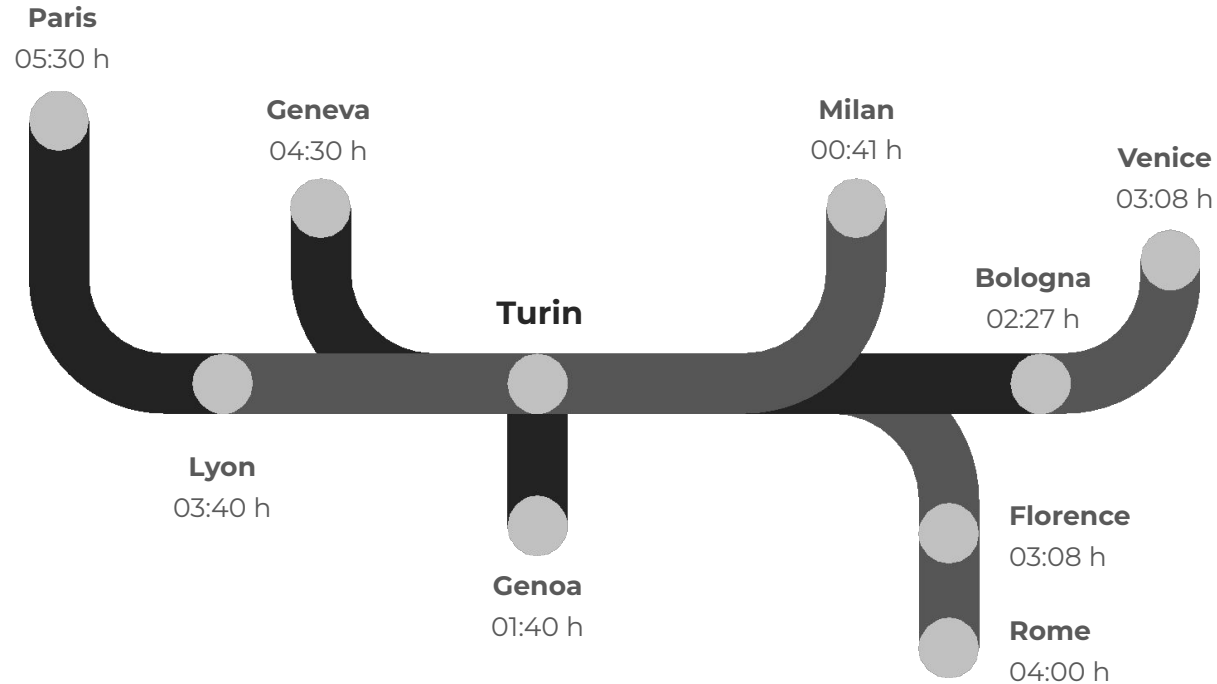
Lingotto Studios is an important node in Turin's **public transport** network: the venue can be reached by underground, bus, and train.

By car, Lingotto Studios is only 35 minutes from **Turin Caselle Airport** and 1.5 hours from **Milan Malpensa Airport**, both of which are served by national and intercontinental flights.

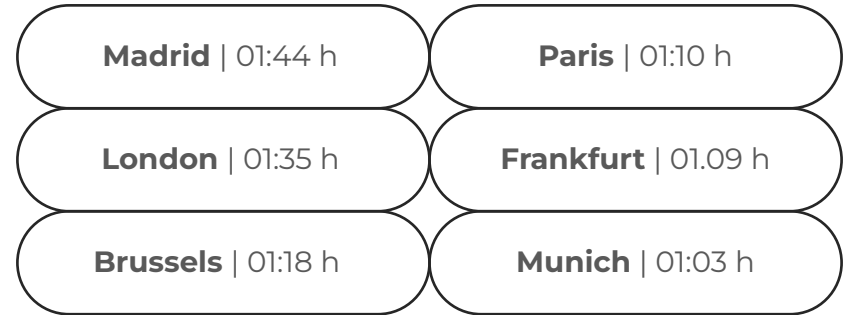
Thanks to its strategic location at the crossroads of Western and Southern Europe and the region's rich infrastructure, Turin is easily accessible from many **European cities** - not just by **airplane**, but also by high-speed **trains**.



# Rail and Air Connections



**Italy's third station**  
by passenger flow



**150 direct flights**  
worldwide



Thanks!



LINGOTTO  
FIERE

lingottofiere.it